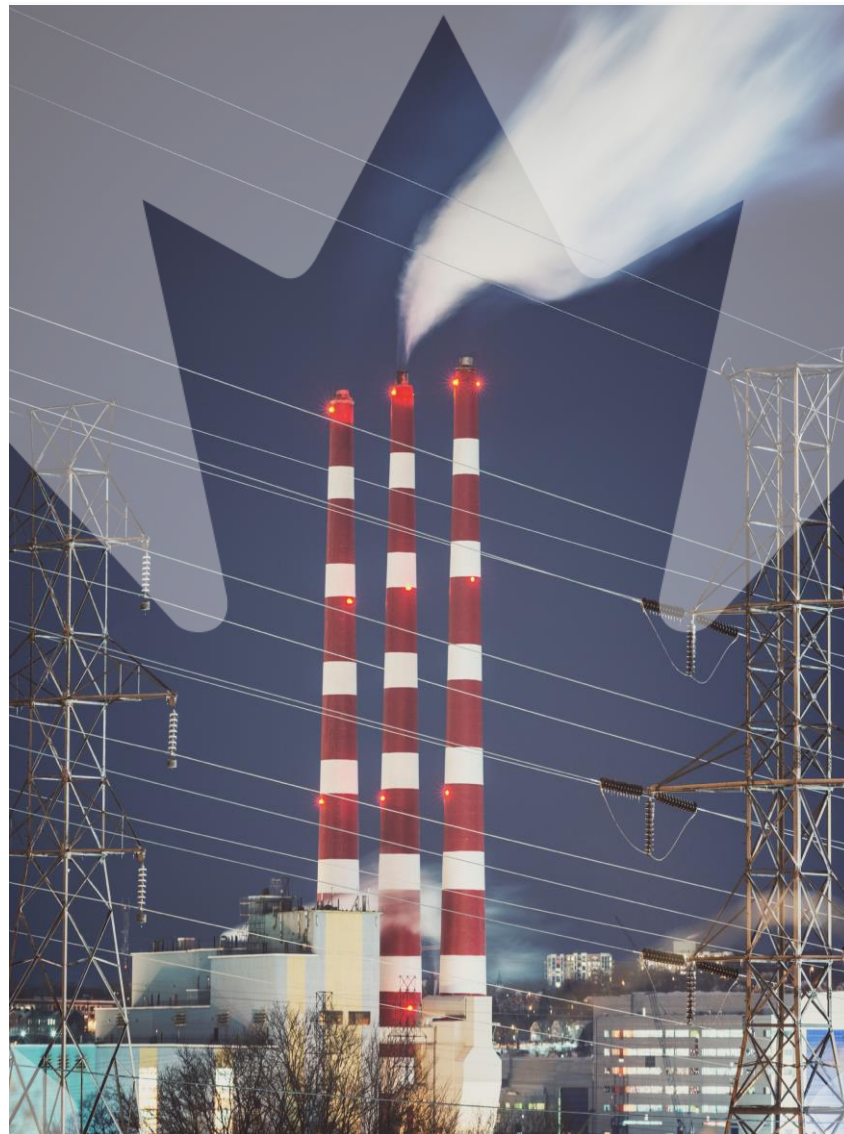




# Canada's National Pollutant Release Inventory

Environment  
and Climate Change Canada



# Objectives of the session

- Provide a brief overview of the National Pollutant Release Inventory (NPRI):
  - Listed substances;
  - Criteria for reporting; and
  - Information reported by facilities.
- Walk through of the NPRI's reporting cycle;
- Demonstrate Environment and Climate Change Canada's (ECCC) Single Window Information Manager (SWIM); and
- Provide an overview of data quality control activities and how to interpret NPRI data.

# Outline

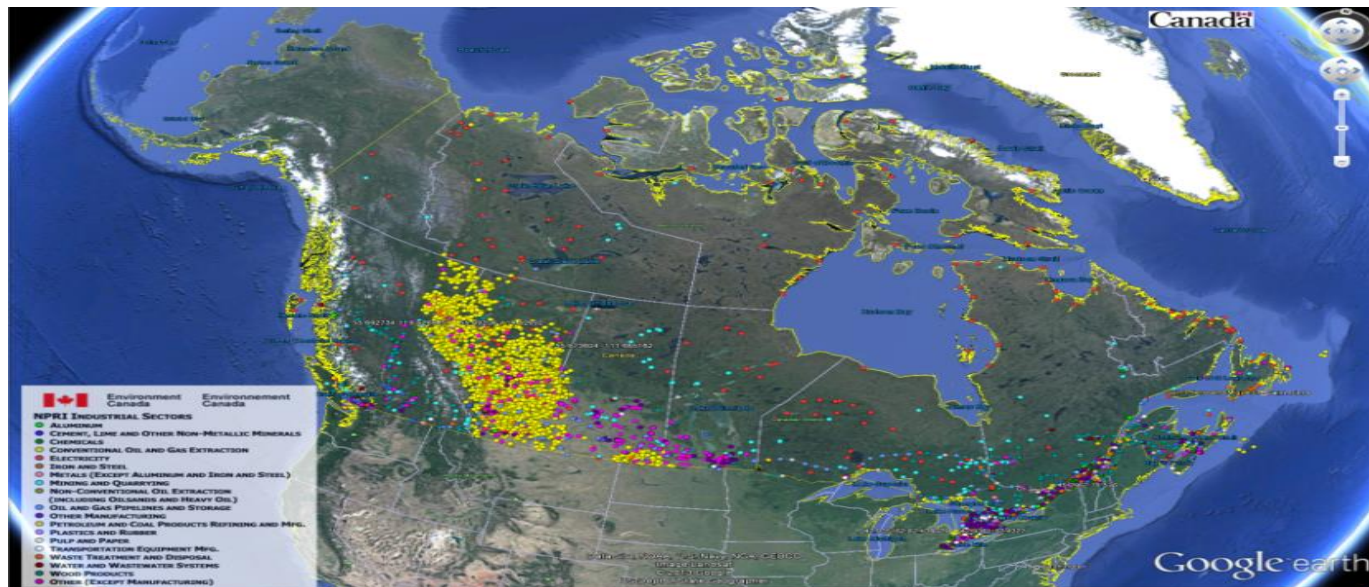
- What is the NPRI and who must report to it;
- What information is reported and who are the NPRI users;
- The annual NPRI reporting cycle; and
- Factors to consider when using and interpreting NPRI data.

# Legal Framework

- The *Canadian Environmental Protection Act, 1999* (CEPA, 1999):
  - Provides explicit authority for ECCC to require the reporting of information on pollutants from owners or operators of facilities that meet reporting requirements; and,
  - Obligates ECCC to:
    - Collect information for the purposes of maintaining a national inventory of pollutants;
    - Annually publish the NPRI; and
    - Inform or consult with stakeholders.
- Every two years a Notice is published in the *Canada Gazette* with detailed reporting requirements.

# What is the NPRI?

- The Canadian public register of pollutants released to the atmosphere, water and land, disposed and transferred for recycling is accessible to the public and mandatory under CEPA, 1999.
- Established in 1993, it collects data from approximately 7,000 facilities on over 320 substances, based on mandatory annual reporting under CEPA, 1999.

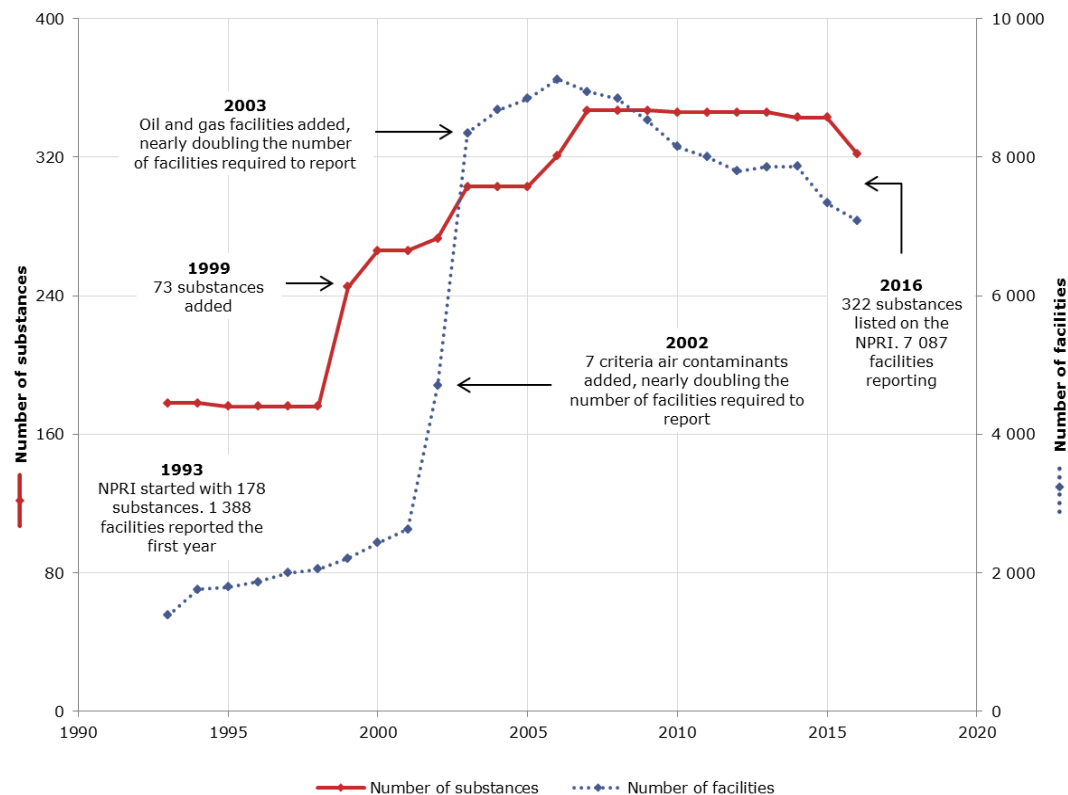


# What is the NPRI? (2)

- The NPRI is a key resource for identifying and monitoring sources of pollution in Canada. It exists to:
  - Identify pollution prevention priorities;
  - Support assessment and risk management of chemicals and air quality modelling;
  - Encourage actions to reduce release of pollutants into the environment;
  - Improve public understanding; and
  - Support annual international reporting.
- Public “right-to-know” is a fundamental underlying principle of the NPRI.

# What is the NPRI? (3)

- Since 1993, the first year of the NPRI, ECCC has:
  - Added over 150 substances, including toxic substances and air pollutants; and
  - Reduced thresholds or established different reporting criteria for certain substances and activities.



- A list of changes to NPRI requirements over time is available at:  
<https://www.canada.ca/en/environment-climate-change/services/national-pollutant-release-inventory/substances-list/history-reporting-requirements.html>

# Who must report?

- NPRI reporting requirements are published in *Canada Gazette*, Part 1.
  1. Facilities are subject to the reporting requirements if:
    - Total number of hours worked at the facility exceeded the 20,000-hour employee threshold (i.e., approximately 10 full-time employees); or
    - They carry out certain specified activities:
      - Wood preservation, sewage sludge incineration, hazardous waste incineration, hospital waste incineration, operations at pits or quarries where production is  $\geq$  500,000 tonnes
  2. Individual substances are declared if:
    - Thresholds are exceeded for:
      - Quantity manufactured, processed or otherwise used (MPO); or
      - Quantity released (for air pollutants).
    - Certain activities occur (e.g., dioxins/furans and hexachlorobenzene)



# Who must report? (2)

- Some industrial sectors:
  - Oil and gas extraction, chemical pulp mills, petroleum refineries, mining, metal manufacturing, chemical manufacturing
- Treatment facilities:
  - Waste treatment and disposal, sewage treatment facilities
- Some services facilities:
  - Electric power generation, airports, cargo handling, research and development facilities, hospitals
- Government facilities:
  - Department of National Defence, Correctional Services Canada

# What information is reported?

## OFF-SITE TRANSFERS FOR TREATMENT AND DISPOSAL



- Physical
- Chemical
- Biological
- Incineration or thermal where energy is not recovered
- In a municipal sewage treatment plant



- Landfill
- Land application
- Underground injection
- Storage off-site prior to final disposal
- Tailings and waste rock

## ON-SITE RELEASES



- Stack or point releases
- Storage or handling releases
- Fugitive releases
- Spills
- Road dust
- Other non-point releases



- Direct discharges
- Spills
- Leaks



- Spills
- Leaks
- Other land releases that are not disposals

## OFF-SITE TRANSFERS FOR RECYCLING



- Energy
- Solvents
- Organic substances (not solvents)
- Metals and metal compounds
- Inorganic materials (not metals)
- Acids or bases
- Catalysts
- Pollution abatement residues
- Refining or reuse of used oil
- Other recovery, reuse or recycling activities

## ON-SITE DISPOSALS



- Landfill
- Land application
- Underground injection
- Tailings and waste rock

### Facility information:

Location, industry type, contacts

### Pollutant quantities

### Type of use (of substance):

For sale, by-product, additive

### Pollution Prevention activities

Reasons for changes compared to quantities reported from previous years

### Comments

### Shutdown periods

### Destinations of off-site transfers

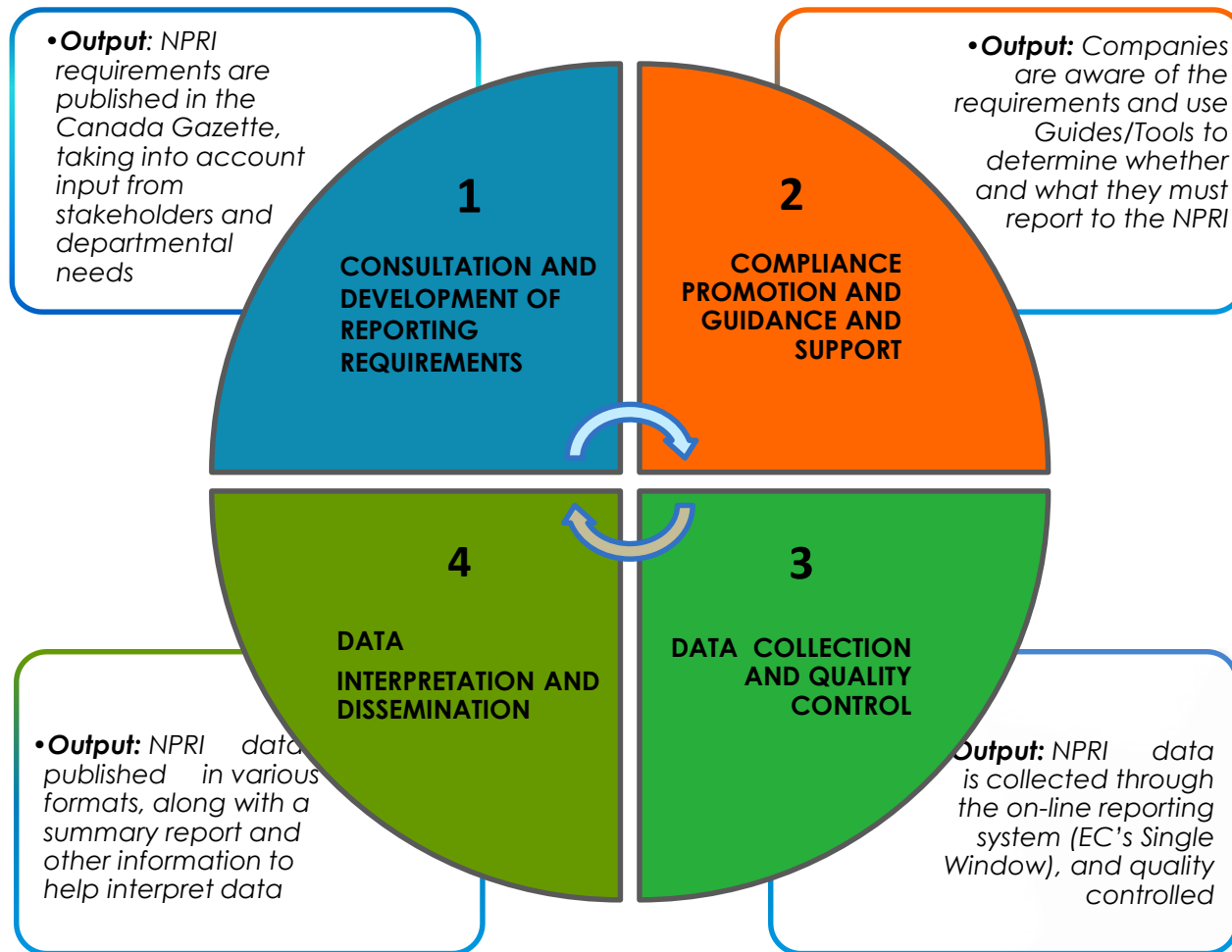
# What substances are on the NPRI?

- Over 320 substances are listed on the NPRI, including toxic substances, air pollutants and other substances of concern.
- They are listed in different parts, each with its own reporting criteria:
  - Part 1A – Core Substances [10 tonnes MPO, at >1% concentration except by-products];
  - Part 1B – Alternate Threshold substances [MPO, with lower mass and/or concentration thresholds];
  - Part 2 – Polycyclic Aromatic Hydrocarbons (PAHs) [50 kg released, disposed or transferred off-site for recycling, 5 kg for individual reporting];
  - Part 3 – Dioxins, Furans & Hexachlorobenzene [specified activities];
  - Part 4 – Criteria Air Contaminants (CACs) [released quantity]; and
  - Part 5 – Individual Volatile Organic Compounds (VOCs) [1 tonne released to air if Part 4 criteria for Total VOCs is met].

# NPRI Users

- NPRI data is published on the NPRI webpage, as well as on the Government of Canada's Open Data Portal and is used by a variety of users:
  - Governments and International Organizations:
    - ECCC's programs;
    - Other federal departments and provincial/territorial governments; and
    - International organizations and other countries' governments.
  - Industry associations and individual companies
  - Public:
    - Canadians;
    - Non-government organizations;
    - Community groups;
    - Educators and students; and
    - Media.
  - Universities
  - Financial Institutions

# Annual NPRI Reporting Cycle



# Annual NPRI Reporting Cycle (2)

## Each reporting year

- June: Deadline for facilities to report releases for past reporting year (i.e., calendar year)
- July: Publication of preliminary (i.e., unreviewed) data on the NPRI website
- June to September: Quality control of submitted data and follow-up with facilities
- October to December: Preparation of data highlights
- December: Publication of the data highlights and reviewed data in various formats

## Every two years

- Winter: Publish Notice with reporting requirements in *the Canada Gazette* for the two upcoming reporting years

# Can the NPRI requirements be changed?

- Anyone can propose changes to the NPRI reporting requirements
  - Contact the NPRI to discuss options and timing.
  - Once a formal proposal has been prepared, consultation takes place through the NPRI Multi-Stakeholder Work Group, other identified stakeholders and the public.
- Addition or deletion of substances
  - Is the substance :
    - manufactured, processed or otherwise used in Canada?
    - of health and/or environmental concern?
  - Do facilities contribute significant releases of the substance?
  - Does inclusion of the substance support one or more of the objectives of the NPRI?
- Criteria to assess whether thresholds modifications are appropriate:
  - Science-based justification ;
  - Capability of reporting facilities to provide the required information; and
  - The significance of the releases from reporting facilities.

# Canada's Experience: Consultations

- A consultative process was used to design the NPRI and is used for the consideration of changes.
- Key components:
  - Established a standing multi-stakeholder group;
  - Clear expectations provided at the outset;
  - Criteria for evaluating changes; and
  - Final decision on changes remains with ECCC.





# Compliance Promotion & Support to Reporting Facilities



- Reporting facilities receive assistance in meeting reporting requirements
  - General guidance to explain the requirements
  - NPRI toolbox with technical guidance
  - Estimation tools and calculators
  - Links to external resources
- Estimation methods allowed:
  - Surveillance or tests at the source
  - Mass balance
  - Emission factors
  - Engineering estimates
- Compliance promotion
  - E-mails to reporters at the launch of reporting and near the deadline.
  - Targeted sectorial compliance promotion activities, based on identified priorities, to inform potential non-reporting facilities of the requirements.

# Ensuring NPRI Data Quality

- Reporting facilities submit their NPRI reports using ECCCC's Single Window Manager (SWIM), which also allows them to report to a number of other programs.
  - SWIM has some built-in data quality control features such as the pre-population of data from last year's report and the submission of comments for variations in quantities greater than 10%.
- NPRI data quality control activities:
  - As soon as data is received, identification of outliers and follow-ups with facilities take place. This process continues until the reviewed data is ready for publication.
- Participation by various experts in quality control efforts, such as risk managers, industry associations representatives, air quality researchers, etc.

# Choose a secure Sign-In Method

ec.gc.ca

Home

## Choose a secure Sign-In Method

You must sign in to access the Environment and Climate Change Canada ("ECCC") service you requested.

Continue to Sign-In Partner

- Use the same sign-in information you use for other online services (e.g. online banking).
- None of your information (e.g. financial, banking) will be shared with ECCC. Your Sign-In Partner will not know which government service you are using.
- You will temporarily leave the ECCC web site to use your Sign-In Partner.
  - ▶ View the full list of Sign-In Partners

BMO Financial Group

CIBC  
Banking that fits your life.

NATIONAL  
BANK

RBC

Scotiabank®

TD

Desjardins

ATB Financial

Affinity  
Credit Union

Choice  
Rewards

Tangerine  
Forward Banking

uni

CAISSES  
POPULAIRES

### Resource Centre

[Frequently Asked Questions \(FAQs\)](#)

[Full List of Sign-In Partners](#)

Continue to GCKey

- Sign-in with a GCKey user ID and password if you do not use one of the Sign-In Partners.
- Register for a GCKey user ID and password if you do not have one.



## Single Window Information Manager

[Home](#)

[My Profile](#)

[Redeem ECCC Key](#)

[Request Access](#)

[Organizations](#)

[Guidance](#)

[Logout](#)

## Single Window Information Manager

Welcome Derick R Poirier, to Environment and Climate Change Canada's Single Window.

The reporting program(s) listed below are reporting programs that you currently have access to. If you require others please request access through your organization administrator.

### [Chemicals Management Plan](#)

Jointly delivered by Environment Canada and Health Canada, the Chemicals Management Plan identifies and addresses environmental and health risks under various federal laws.

### [ePCB](#)

This database allows regulatees to submit their PCB reports online as required by the PCB Regulations.

### [Export and Import of Hazardous Waste and Hazardous Recyclable Material Regulations \(EIHWHRMR\)](#)

This online system enables individuals and businesses to submit notices electronically for the import and export of hazardous wastes or hazardous recyclable materials, as well as obtain official documents (e.g. permits) online.

### [National Pollutant Release Inventory \(NPRI\) and Partners](#)

NPRI, Ontario Regulation 127/01, Ontario Toxics Reduction Act, Alberta Environmental Protection and Enhancement Act, National Emissions Reduction Masterplan, and National Framework for Petroleum Refinery Emission Reductions

### [Operational Worker](#)

Application to enable administrators to view and manage program information submitted through United enabled applications

### [Pollution Prevention Planning Notices](#)

ECCC's online reporting tool for persons subject to a Pollution Prevention (P2) Planning Notice published in the Canada Gazette under Part 4 of the Canadian Environmental Protection Act, 1999



## Reporting Details

Reporting Dashboard

## Reporting Dashboard

Welcome to the NPRI reporting module. We have made some changes to the Reporting Dashboard. Click "Help" then "Toggle In-Context Help" for more information.

To help reduce the occurrence of problems encountered while navigating the system, please avoid:

- Using the back and forward buttons of your browser while navigating or entering data;
- Using the «Backspace» key while not in a data entry field;
- Having more than one individual working on the same report;
- Entering data on your report in one browser while having the same report open on another browser.

## Report(s)

Company List

Environment Canada Fontaine

Year

2017

Report Category

Inventory

Status	Facility Name	Report Type	Status	Actions
	▶ test prod	Inventory	Ready to Submit	
	▶ PNR	Inventory	<div><div></div></div> (13/42)	
	▶ Environment Canada	Inventory	<div><div></div></div> (20/35)	
	▶ ON Reg.127's Facility	Inventory	<div><div></div></div> (5/8)	
	▶ BCGHG Test IF_b	Inventory	<div><div></div></div> (4/10)	
	▶ PC Test Facility	Inventory	<div><div></div></div> (1/13)	
	▶ Monette Mechanical	Inventory	<div><div></div></div> (3/24)	
	▶ ON GHG Test Facility 1	Inventory	<div><div></div></div> (7/28)	
	▶ Jennifer Underhill's Namechange Facility	Inventory	<div><div></div></div> (10/25)	
	▶ ON TRA's TEST Facility	Inventory	<div><div></div></div> (10/40)	



## Reporting Details

Reporting Dashboard

Facility Report

☒ Applicable Programs

☒ Contacts

☒ Employees and Activities

☒ General Facility Information

☒ Verify Facility Information

☒ Substance List

Special Reports

☒ Pollution Prevention

## Applicable Programs

Report Progress: 13/13 Page Status: Complete

Please select all that apply.

### - Environment and Climate Change Canada Programs

☒ **NPRI** - National Pollutant Release Inventory

### - Partnering Programs

☐ **ON MOE TRA** - Ontario Ministry of the Environment for the Toxic Reductions Act

☐ **ON MOE Reg. 127/01** - Ontario Ministry of the Environment for the Airborne Contaminant Discharge Monitoring and Reporting Regulation

☐ **NERM** - Chemistry Industry Association of Canada for the National Emission Reduction Masterplan survey

☐ **NFPRER** - National Framework for Petroleum Refinery Emission Reductions

[Back](#)

[Save/Continue](#)

## Reporting Details

Reporting Dashboard

Facility Report

☒ Applicable Programs☒ Contacts☒ Employees and Activities☒ General Facility Information☒ Verify Facility Information☒ Substance List

Special Reports

☒ Pollution Prevention

## Employees and Activities

Report Progress: 13/13 Page Status: Complete

## - Employees

Number of Employees \*

12

## - Activities

If your facility was engaged in any of the following activities, check the relevant box(es), otherwise click "None of the Above". For the second "Activities" list, if you select one of these activities then you must report dioxins, furans and hexachlorobenzene.

**Activities for Which the 20,000-Hour Employee Threshold Does Not Apply: (check all that apply) \***

- ☐ Non-hazardous solid waste incineration ( $\geq 26$  tonnes/year)
- ☐ Biomedical or hospital waste incineration ( $\geq 26$  tonnes/year)
- ☐ Hazardous waste incineration
- ☐ Sewage sludge incineration
- ☐ Wood preservation
- ☐ Terminal operations
- ☐ Discharge of treated or untreated wastewater ( $\geq 10,000$  m<sup>3</sup>/day)
- ☐ Pits and quarries where annual production is  $\geq 500,000$  tonnes
- ☒ None of the above

**Activities Relevant to Reporting Dioxins, Furans and Hexachlorobenzene: (check all that apply) \***

- ☐ Non-hazardous solid waste incineration ( $\geq 26$  tonnes/year)
- ☐ Biomedical or hospital waste incineration ( $\geq 26$  tonnes/year)
- ☐ Hazardous waste incineration
- ☐ Sewage sludge incineration
- ☐ Base metal smelting (including copper, lead, nickel, and zinc)
- ☐ Smelting of secondary lead
- ☐ Smelting of secondary aluminum
- ☐ Manufacturing of iron using a sintering process
- ☐ Operation of electric arc furnaces in steel manufacturing
- ☐ Operation of electric arc furnaces in steel foundries
- ☐ Production of magnesium
- ☐ Manufacturing of Portland cement
- ☐ Production of chlorinated organic solvents or chlorinated monomers
- ☐ Combustion of fossil fuel in a boiler unit to produce electricity ( $\geq 25$  megawatts)
- ☐ Combustion of salt-laden logs in forest products
- ☐ Combustion of fuel in kraft liquor boilers in forest products
- ☐ Wood preservation using pentachlorophenol
- ☐ Titanium dioxide pigment production using chloride process
- ☒ None of the above

## - Activities Relevant to Reporting of Polycyclic Aromatic Hydrocarbons (PAHs)

Did the following activity take place at the facility?

Wood preservation using creosote: \*

No



## Reporting Details

### Reporting Dashboard

#### Facility Report

- ☒ Applicable Programs
- ☒ Contacts
- ☒ Employees and Activities
- ☒ **General Facility Information**
- ☒ Verify Facility Information
- ☒ Substance List

#### Special Reports

- ☒ Pollution Prevention

# General Facility Information

Report Progress: 13/13 Page Status: Complete

## - NPRI

Is this the first time the facility is reporting to the NPRI (under current or past ownership)? \*

Yes

Is the facility controlled by another Canadian company or companies? \*

No

Did the facility report under other environmental regulations or permits? \*

No

Is the facility required to report one or more NPRI Part 4 substances (Criteria Air Contaminants)? \*

No

If 'Yes' to reporting for one or more Part 4 substances:

Was the facility shut down for more than one week during the year? \*\*

Select an o

## Operating Schedule - Days of the Week \*\*

Mon	Tue	Wed	Thu	Fri	Sat	Sun
<input type="checkbox"/>	<input type="checkbox"/>	<input type="checkbox"/>	<input type="checkbox"/>	<input type="checkbox"/>	<input type="checkbox"/>	<input type="checkbox"/>

## Operating Schedule - Hours \*\*

Usual Number of Operating  
Hours per day

Usual Daily Start Time (24h)  
(hh:mm)

## Shutdown Periods \*\*

To report a shutdown period, click the "+" sign to the right side of the screen.

Empty

## - General Comments for Facility

Comments

Back

Validate

Save/Continue



Reporting Details

- Reporting Dashboard
- Facility Report
- ☒ Applicable Programs
- ☒ Contacts
- ☒ Employees and Activities
- ☒ General Facility Information
- ☒ Verify Facility Information
- ☒ Substance List
- Special Reports
- ☒ Pollution Prevention

## Substance List

Report Progress: 13/13    Page Status: Complete

To report for a substance that is already on your list below, click the "Edit" icon to the right of the substance name.  
If the list is empty, or you need to add another substance, click the "+" sign to go to the Substance Search screen.

**IMPORTANT:** when you are finished reporting all of your substance data and special reports, clicking "Validate" at the bottom of this screen will run an error check on your substance report(s) and inform you of any errors that you need to correct prior to submission.

## Substances

Programs

Report Status

All

All

CAS RN	Substance Name	Applicable Programs	Report Status	Actions
100-41-4	Ethylbenzene	NPRI	Completed (5/5)	 

## Reporting Details

Reporting Dashboard

Facility Report

- ✓ Applicable Programs
- ✓ Contacts
- ✓ Employees and Activities
- ✓ General Facility Information
- ✓ Verify Facility Information
- ✓ Substance List
  - ✓ Substance Reporting Status
  - ✓ General Information about the Substance
  - ✓ On-site Releases
  - ✓ Disposals
  - ✓ Recycling

Special Reports

- ✓ Pollution Prevention

## General Information about the Substance

Report Progress: 13/13 Page Status: Complete

## - Releases and Transfers of the Substance

## Releases and Transfers of the Substance

Was the substance released on-site? \*

Yes

If the substance was released on-site and the total quantity released was less than one tonne, select the check-box below

☐

The substance will be reported as the sum of releases to all media (total of 1 tonne or less).

## Disposals and Off-site Transfers for Recycling

Was the substance disposed of (on-site or off-site), or transferred for treatment prior to final disposal? \*

Yes

Is the facility required to report on disposals of tailings and waste rock for the selected reporting period? \*

No

Was the substance transferred off-site for recycling? \*

Yes

## - Nature of Activities \*

Indicate whether the substance was manufactured, processed, or otherwise used, by selecting the nature of such activities.

## Manufacture the Substance

- ☒ For on-site use/processing
- ☐ For sale/distribution
- ☐ As a by-product
- ☐ As an impurity

## Process the Substance

- ☐ As a reactant
- ☐ As a formulation component
- ☐ As an article component
- ☐ Repackaging only
- ☐ As a by-product

## Otherwise Use of the Substance

- ☐ As a physical or chemical processing aid
- ☐ As a manufacturing aid
- ☐ Ancillary/other use
- ☐ As a by-product

Back

Validate

Save/Continue

## Reporting Details

Reporting Dashboard

Facility Report

☒ Applicable Programs☒ Contacts☒ Employees and Activities☒ General Facility Information☒ Verify Facility Information☒ Substance List☒ Substance Reporting Status☒ General Information about the Substance☒ On-site Releases☒ Disposals☒ Recycling

Special Reports

☒ Pollution Prevention

## On-site Releases

Report Progress: 9/13 Page Status: Incomplete

Click "Edit" to enter your reportable values.

In order to calculate totals, you must click the "Validate" button.

## - Enter the values for releases to air for the substance

## Releases to Air

Category	Basis Of Estimate	Quantity (Tonnes)	Edit
Stack or Point Releases	NA - Not Applicable		Edit
Storage or Handling Releases	NA - Not Applicable		Edit
Fugitive Releases	NA - Not Applicable		Edit
Spills	NA - Not Applicable		Edit
Other Non-point Releases	NA - Not Applicable		Edit

Total - Releases to Air

## - Enter the values for releases to water bodies

## Releases to Water Bodies

Category	Basis Of Estimate	Quantity (Tonnes)	Edit
Direct Discharges	NA - Not Applicable		Edit
Spills	NA - Not Applicable		Edit
Leaks	NA - Not Applicable		Edit

Total - Releases to Water Bodies

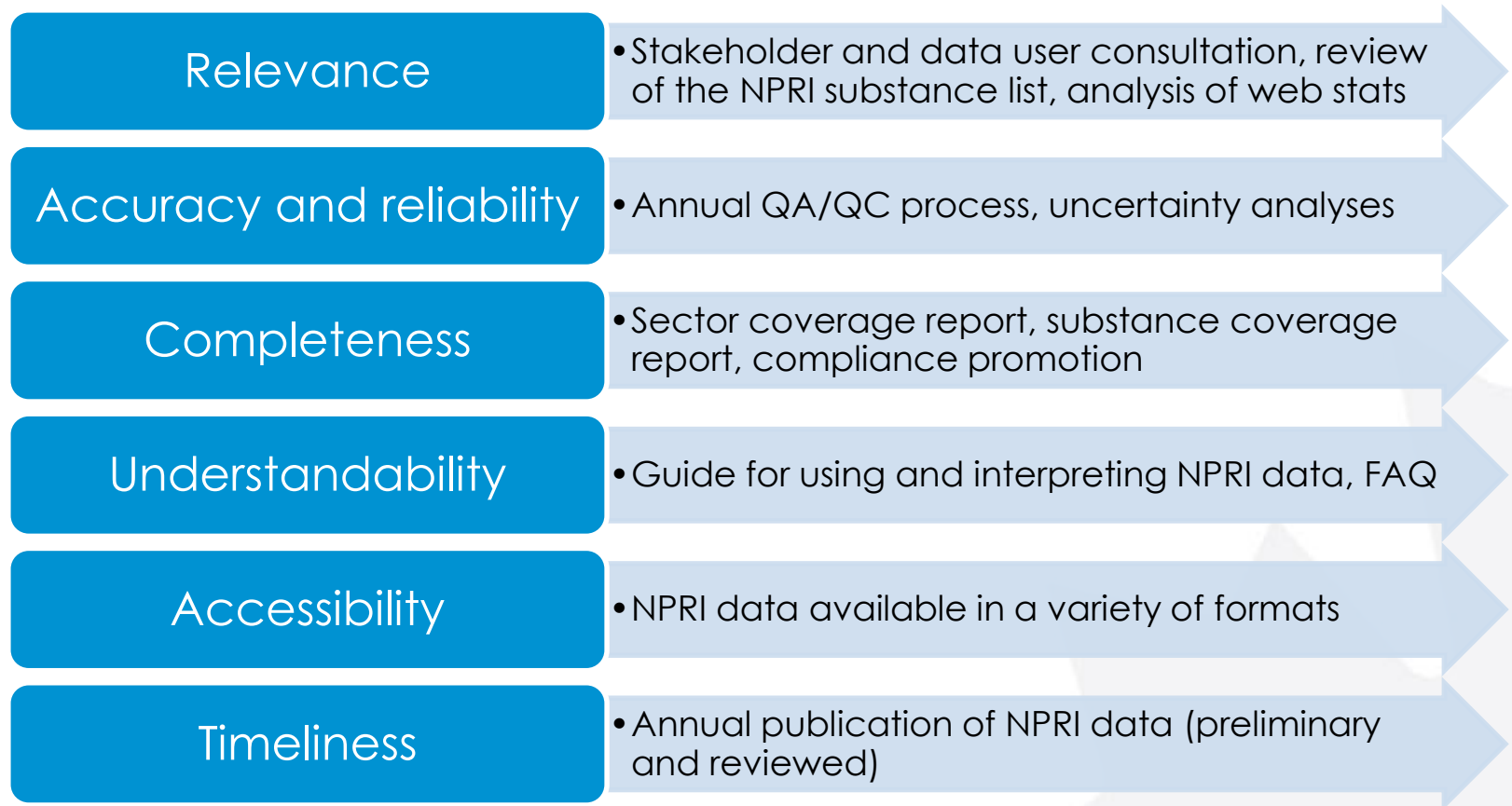
## - Enter the values for releases to land (surface and underground)

## Releases to Land (the nature of "Other" releases must be specified in the Comments)

Warning: Please ensure that the quantities entered in the **On-Site Releases to Land - Other** category are releases and not for the purpose of disposal. NPRI substances sent to landfill, used for land application, disposed of by underground injection or transferred for treatment or storage are categorized as **Disposals**. Disposal quantities, including tailings and waste rock, should be reported under the disposal category only, and not under releases to land, to avoid double-reporting.

# Ensuring NPRI Data Quality (2)

- NPRI Data Quality Management Framework



# Interpretation of data

- When analyzing NPRI data, always use the latest reviewed data. Preliminary data may contain reporting errors and skew results.
- The [Guide for Using and Interpreting NPRI Data](#) is available on our website.
- Considerations when using NPRI data:
  - The NPRI does not cover all pollution sources and substances in Canada.
  - Pollutants have distinct properties and vary in toxicity.
  - Assessment of risks cannot be determined from NPRI data alone.
  - Calculation methods used by facilities for quantifying releases can vary.
  - Efforts to improve NPRI data quality are in place.
  - Reporting requirements have changed over time and can affect data interpretation.
  - The NPRI does not monitor reporting to other programs and regulations.

# Analysis & Comparability

Type of analysis	Factors affecting data analysis & comparability
Year to year	Changes to NPRI reporting requirements over time Changes at the facility level Changes in calculation methods Data updates Regulatory environment
Substance to substance	Aggregating data for different substances Units of measurement
Facility to facility	Specific facility processes Calculation methods
Comparisons between pollutant release and transfer registers	US Toxics Release Inventory (TRI), Mexico Registro de Emisiones y Transferencia de Contaminantes (RETC), Commission for Environmental Cooperation's (CEC) Pollutant Release and Transfer Registers (NAPRTR), Australia National Pollutant Inventory (NPI), European Pollutant Release and Transfer Register (E-PRTR) etc.
Releases vs transfers & disposals	Direct releases compared to controlled disposals of substances
Unspecified media (>1 tonne all media releases)	Total releases compared to air, water, and land releases
Tailings and waste rock	Inception in 2006 Negative values allowed Exclusions apply

# Double-counting

Substances	Found on NPRI Substance List as	Description
Total reduced sulphur (TRS)	Part 1A: TRS, COS, CS <sub>2</sub> and H <sub>2</sub> S	TRS consists of 6 substances, with 3 of them on NPRI, in addition of TRS
Particulate matter (PM)	Part 4: Total PM (TPM), PM <sub>10</sub> and PM <sub>2.5</sub>	Each PM has a different reporting release threshold: TPM (20 tonnes), PM <sub>10</sub> (0.5 tonne) & PM <sub>2.5</sub> (0.3 tonne)
Polycyclic aromatic hydrocarbons (PAHs)	Part 2: 30 individual PAHs PAHs, total unspciated	PAH species can be reported: <ul style="list-style-type: none"> <li>- Individually</li> <li>- As "PAHs, total unspciated"</li> <li>- Combination of both categories</li> </ul>
Volatile organic compounds (VOCs)	Part 1A: ~100 individual substances Part 4: Total VOCs Part 5: 75 speciated VOCs 20 VOCs in parts 1A and 5	Calculation methods may differ between each category of VOCs
Transferred for disposals		Substances that were transferred off-site from a facility A can be found as on-site disposals for the receiving facility B: both facilities can report to the NPRI for different categories

# Other relevant programs

Program	Overview	For more information...
ECCC Greenhouse Gas Reporting Program (GHGRP)	<ul style="list-style-type: none"> <li>• 24 listed GHGs</li> <li>• 50 kt CO<sub>2</sub> eq. annual threshold (reduced to 10 kt starting with 2017 data)</li> <li>• ~560 facilities reporting per year (596 in 2016)</li> </ul>	<a href="https://www.canada.ca/en/environment-climate-change/services/climate-change/greenhouse-gas-emissions/facility-reporting.html">https://www.canada.ca/en/environment-climate-change/services/climate-change/greenhouse-gas-emissions/facility-reporting.html</a>
ECCC Air Pollutant Emission Inventory (APEI)	<ul style="list-style-type: none"> <li>• 17 listed substances and groups of substances</li> <li>• NPRI data is used for various industrial sectors including ore and mineral industries, as well as manufacturing</li> <li>• NPRI data is not used for sectors such as transportation and agriculture</li> </ul>	<a href="https://www.canada.ca/en/environment-climate-change/services/pollutants/air-emissions-inventory-overview.html">https://www.canada.ca/en/environment-climate-change/services/pollutants/air-emissions-inventory-overview.html</a>  See Table A2-1 of the APEI Report
Black Carbon Inventory	<ul style="list-style-type: none"> <li>• Black carbon emitted in PM<sub>2.5</sub> resulting from combustion</li> <li>• APEI/NPRI data used for various sectors</li> </ul>	<a href="https://www.canada.ca/en/environment-climate-change/services/pollutants/black-carbon-emissions-inventory.html">https://www.canada.ca/en/environment-climate-change/services/pollutants/black-carbon-emissions-inventory.html</a>



# Contact the NPRI

## **Dérick Poirier**

Program Integration Division  
Science and Technology Branch  
Environment and Climate Change Canada  
351, boulevard Saint-Joseph  
Gatineau (Québec) K1A 0H3  
[Derick.Poirier@canada.ca](mailto:Derick.Poirier@canada.ca)  
(819) 938-5644